



[BHT-900 Series]

The BHT-900 offers outstanding performance at an affordable price and features a high maximum reading speed of 400 scans per second. Thanks to CCD technology, it can even read damaged or poor-quality barcodes. The device can run for an exceptionally 200 hours between charges and is extremely robust, being able to withstand 60 drops onto concrete from a height of 1.2 m (3.9 ft.) C-level programming capable, free application generator (Easy Pack) creates data collection programs.

A POWERFUL PERFORMER

CCD (charged coupled device) technology

- ☑ Top-quality reading performance
- ☑ High-speed scanning of up to 400 scans/second
- ☑ Excellent reading ability, even with hard-to-read or damaged barcodes

Battery

- ☑ Battery life of up to 200 hours between charges
- ☑ Compatible with Sanyo eneloop® or any rechargeable AA batteries
- ☑ Can be charged using a base station or USB cable

Large storage capacity

- ☑ 16 MB (user area 8 MB)

USER FRIENDLY

Practical design

- ☑ Slim and light, fits in a shirt pocket
- ☑ Ergonomically shaped head for easy scanning
- ☑ Three trigger keys enable scanning with thumb and index finger (BHT-904 model)

Multi-communication

- ☑ Bluetooth 2.1
- ☑ Batch communication (compatible with RS232C, USB)
- ☑ USB direct connection compatible with USB-COM and MTP (Media Transfer Protocol)

Security

- ☑ Stable BHT-OS operating system
- ☑ No data loss if battery dies

LONG-LASTING

Durability

- ☑ Designed to provide reliability for many years
- ☑ Rugged construction; only device in its class to withstand 60 drops onto concrete from a height of 1.2 meters
- ☑ Dust- and waterproof to IP54 standard

ACCESSORIES

- ☑ Hand strap (included)
- ☑ Communication cradles:
CU-901 (RS232C with charging function)
CU-921 (USB with charging function)
- ☑ USB cable, shoulder strap, soft case, neck strap, waist case

SOFTWARE

Out-of-the-box software

- ☑ Ready to use instantly after turning on
- ☑ No complicated settings are required, due to preinstalled basic operations software
- ☑ Collects and immediately matches data

BHT-Basic 4.0 development tools

- ☑ Development pack – application generator
- ☑ Compiler
- ☑ Transfer utility
- ☑ Transfer utility DLL pack
- ☑ Simulator library
- ☑ Program converter

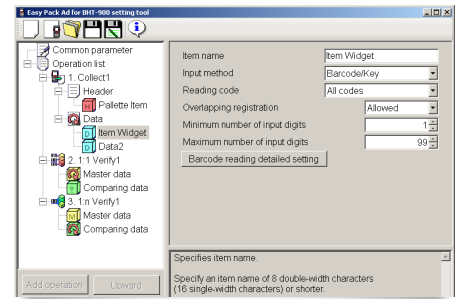
C-language development tool (library)

- ☑ Allows development with the most popular programming language (C)

EASY PACK FOR BHT-900

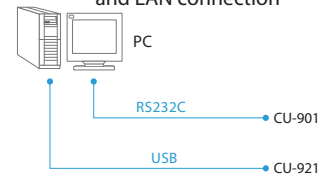
Create data collection applications for BHT-900

- ☑ Allows data collection as well as 1:1/1:n verification. Communication tool included.



BATCH COMMUNICATION

Compatible with RS232C, USB, and LAN connection



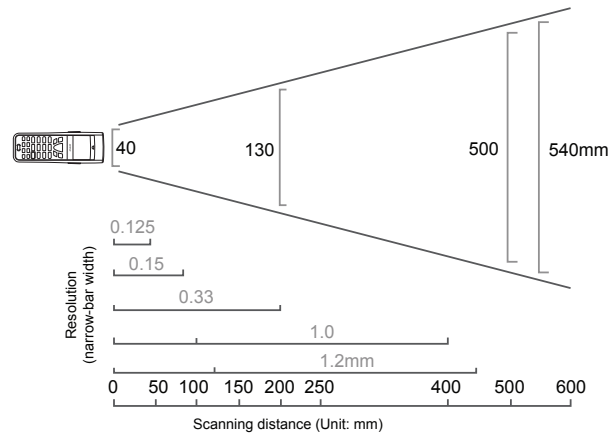
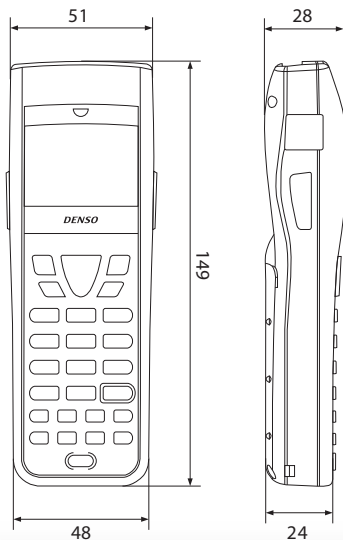
Communication cradle

TECHNICAL DATA

Model		BHT-904B	BHT-904BB	BHT-914B
Storage				
CPU		32-bit RISC		
Memory ¹		16 MB (user-file area 8 MB)		
Operating system		BHT-OS		
Display				
Resolution		128 x 96 pixels		
Display		Liquid crystal dot-matrix display (monochrome)		
Size		32.6 x 24.5 mm		
Visual representation		21 lines x 12 characters (standard size), 21 lines x 16 characters (small size)		
Foreground Illumination		White LED		
Scanner				
Scanning system		Advanced Scanning (CCD)		
Codes supported		EAN-13/-8 (JAN)13/-8), UPC-A/-E, UPC/EAN with additions, Interleaved 2 of 5, Codabar (NW-7), Code 39, Code 93, Code 128, GS1-128), RSS (GS1 DataBar)		
Resolution		0.125 mm		
Scan confirmation		Three-color LED (red/green/blue)		
Keypad				
Number of keys		28 keys (including 3 trigger keys)	26 keys (including 1 trigger key)	
Data transfer				
Optical interface	Standard	Infrared (IrDA-SIR Version 1.2 [low power] compatible)		
	Transfer speed	460.8 kbit/s max.		
	Max. distance	Approx. 0.15 m		
Bluetooth [®]		Bluetooth Version 2.1 (EDR Class 2 compatible)		
Cable interface		USB 2.0 (Hi-speed 480 Mbit/s), USB-COM/MTP (2)		
Power supply				
Main power supply		2 x alkaline AA batteries or 2 x AA Sanyo eneloop [®] rechargeable batteries		
Battery operating time ²		Up to 200 hours ³		
Battery-charging options		CU-901 (RS232C with charging function), CU-921 (USB with charging function), USB cable (CBBA-US2000/401), rechargeable AA batteries w/ wall charger, disposable alkaline batteries	USB cable (CBBA-US2000/401), rechargeable AA batteries w/ wall charger, disposable alkaline batteries	
Tools		Vibration, adjustable-volume beeper, resume and remote-activation function		
Operating conditions				
Operating temperature		5 °C ~ 50 °C		
Dust- and splash-proof protection		IP54		
Shock Resistance		60 times onto concrete floor from 1.2 m (3.9 ft.)		
Weight		Approx. 160 g		

1. User area includes font-file area (approx. 400 KB).
2. Operation hours may vary according to operating conditions.
3. Reading twice per 10 sec., without Bluetooth communication.
4. Tested data, not guaranteed.

DIMENSIONS IN MM



DENSO ADC

3900 Via Oro Ave.
Long Beach, CA. 90810
Phone + (888) MY DENSO
+ (888) 693 3676
Fax + (310) 835 8724
denso-adc@denso-diam.com
www.denso-adc.com

DENSO



INVENTOR OF THE QR CODE[®]

Legacy Technology Services

We Rent & Sell All Types Of Barcode Equipment

Call now to talk to an expert

866-271-9891

www.LegacyGlobal.com

Some brands we carry



MOTOROLA

Intermec

DATALOGIC™

Honeywell

EQUINOX
PAYMENTS



About us

- Legacy Technology Services is a leading nationwide provider of mobile computing, barcode, printers and point of sale equipment and services.
- For over a decade, thousands of clients across North America have trusted us to provide equipment from leading manufacturers backed by the services to support them.

Latest Hardware from top manufacturers

- Legacy handles virtually every major manufacturer of mobile computing, barcoding and point of sale equipment.

Expert Repair and Maintenance services

- Legacy is one of the best repair facilities in North America

Discontinued product sourcing

- They don't make it anymore? Our inventory also includes manufacturer close-outs and discontinued equipment to support our clients legacy infrastructure.

Trade-in and Disposal services

- That old equipment laying around your facility may still have some value. Legacy routinely purchases equipment from our clients around the globe.
 - Data destruction
 - Hardware disposal
 - Auditing services

Dedicated client account team

- Dedicated, highly trained account managers are here to answer all your questions and provide top notch service.

Equipment rental services

- Sometimes renting is a better solution, Legacy's huge rental inventory provides the equipment you need for temporary needs and projects.



Legacy, Inc.

160 West Road,
Ellington, CT 06029

Toll Free: 866-271-9891

Fax: 888-522-4684